

# Zeitschrift

**March 2007**



Rose Merrett's Oval.

**IN THIS ISSUE:**

**2007 Nationals Guide**

**Dural Putt Putt**

**News From Germany**

**The Toy Department**

**Club Library Update**

**Route 66 to Canberra**

**Plus all the usual stuff.**



**Published by Club Veedub Sydney.**

**[www.clubvw.org.au](http://www.clubvw.org.au)**

**Proudly a member of the Council of Motor Clubs.**



# Club Veedub Sydney Committee 2006-07.

President:	David Birchall	(02) 9534 4825	david@clubvw.org.au
Vice President:	Andrew Rankin	(02) 4733 2848	
Secretary & Public Officer:	Bob Hickman	(02) 4655 5566	hicko@inet.net.au
Treasurer:	Martin Fox	0411 331 121	martin@clubvw.org.au
Editor:	Phil Matthews	(02) 9773 3970	philjmatthews@optusnet.com.au
Webmaster:	Steve Carter	0413 811 186	info@clubvw.org.au
Trivia Mistress:	Heather Pascoe	(02) 9836 0464	
Book Librarian	Simon Matthews	(02) 9898 3665	
Video Librarian:	Joe Buttigieg	(02) 9863 4536	
Tool Librarian:	Bob Hickman	(02) 4655 5566	
Merchandising:	Raymond Rosch	(02) 9601 5657	sales@clubvw.org.au
Raffle Officer:	Christine Eaton	(02) 9520 4914	
Vintage Registrar:	Leigh Harris	(02) 9533 3192	leigh@clubvw.org.au
VW Nationals Coordinators:	David Birchall	(02) 9534 4825	
	Bob Hickman	(02) 4655 5566	
	Chris Pascoe	(02) 9836 0464	

## General Committee:

Zoran Milvica	Ron Kirby
John Weston	Ken Davis
Belinda Godfrey	Shirley Pleydon
Ray Pleydon	Brian Van Derley
Mike Said	Danny McFaddyn
Henry	Russell

## Canberra Committee.

Chairman:	Steve Crispin	0419 429 453
Secretary:	Bruce Walker	0400 119 220
Committee Members:		
Mark Palmer	0416 033 581	
Dimitris Tsifakis	0421 725 805	

*Please have respect for the committee members and their families and only phone at reasonable hours.*

## We wish to thank our continuous VW Nationals sponsors:

### 19 years.

Volkswagen Group Australia  
Andrew Dodd Automotive  
Blacktown Mechanical Repairs  
C and S Automotive  
H&M Ferman  
Klaack Motors  
Stan Pobjoy's Racing Engineering  
Vintage VeeDub Supplies  
Volksbahn Autos Pty Ltd

### 15 years and over.

Shannons Car Insurance  
Wolfsburg Motors

### 10 years and over.

Australian VW Performance Centre  
Bookworks  
Cruisin Car Carpets  
Dr Mosha the VW King  
Indian Automotive  
Korsche Performance Centre  
Mick Motors  
North Rocky & Import Parts

### 5 years and over.

Alpha Dot Net	Reliable Automotive Service
Dodgy Bros. Batteries	Rivo Auto Electrical
Ben Durie Automotive	Stokers Siding Garage
Cupid Wedding Cars	TCCA Motorsport
Harding European	Unicap Pty Ltd
Imported Car Wreckers	Volkshaven
Karmann Promotions	Volksworld
Mobile Model Cars	Wurth Fasteners
NRMA Insurance	

## Kleingedrucktes.

Monthly Club VeeDub meetings are held at Greyhound Social Club Ltd., 140 Rookwood Rd, Yagoona, on the third Thursday of each month from 7:30 pm. All members and visitors are most welcome.

All mail to Club Veedub Sydney should be addressed via the Secretary, c/- 14 Willoughby Cct Grassmere NSW 2570, or emailed to info@clubvw.org.au.

Zeitschrift is published monthly by Club VeeDub Sydney. We welcome all letters and contributions of general VW interest. These may be edited for reasons of space, clarity, spelling or grammar. Deadline for all contributions is the first Thursday of each month. Views expressed in Zeitschrift are those of the writers and do not necessarily represent those of Club VeeDub Sydney. Articles may be reproduced with an acknowledgment to Zeitschrift. Club VeeDub Sydney, its members and contributors to Zeitschrift cannot be held liable for consequences arising from information printed in the magazine. Back issues are available from the Secretary, or in PDF format on the Club Veedub website.

Please note that all events listed in the Zeitschrift Club Calendar or on the Club Veedub web page are sanctioned by the Club and its Committee.

Club **Audi** NSW  
The Audi Drivers Club



# Hunter Valley Wine & Chocolate Tasting Expedition Sunday 18 March 2007

Club Veedub members are invited to join us on our Hunter Valley scenic drive and family social lunch event, combining a truly astonishing country drive, an outstanding lunch venue, bountiful wineries of the Hunter Valley and the exceptionally picturesque Hunter Valley Gardens and Boutique Shopping Village.

- 08:30: Meet and Driver Briefing at Gloria Jeans Coffees, **George Street, Windsor** (nearest cross street is Thompson Square). Please arrive with a full tank of fuel and be ready to depart from this location.
- 09:00: VW/Audi Owners, Start your Engines! Open your sunroof, put on your favourite driving song, sink into your sumptuous leather or vinyl seats and set your cruise control as we begin our journey on one of NSW's most coveted roads – The Putty Road.
- 11:45: Lunch @ the Blue Tongue Brewery (Hunter Resort, Hermitage Road, Pokolbin NSW 2320 Hunter Valley) Put your feet up and relax after that long drive while sampling golden ale from the freshly brewed on site Blue Tongue Brewery - including alcoholic ginger beer. The bar menu is also comprehensive and caters to all appetites. Starters from \$6, mains from \$15, beverages from \$2.
- 14:00: Vineyard Wine Tour. Take a look behind the scenes of the Hunter Valley's largest Winery and also sample some of the best wines from the region. (\$7.00 per person payable to the Hermitage Resort). Closed shoes must be worn and unfortunately children under 10 years of age cannot attend this activity.
- 15:30: Hunter Valley Gardens. Sample some of the finest chocolates and cheeses NSW has to offer, just the thing for dessert! Wander through the countless antique shops, galleries and other speciality stores with the scent of fresh fine roasted coffee and sinful cakes from the dozens of cafés filling the fresh valley air.

Club Veedub Sydney and Club Audi NSW do not condone drinking and driving. If you plan to drink a significant volume of alcohol, please ensure that you have a designated driver who will limit their consumption and/or use the numerous hotel facilities available in Hunter Region.

The club organiser for this event is Marc Hammond. You can RSVP to Marc via email at [marc@dubaudinsw.org](mailto:marc@dubaudinsw.org) or phone on 0419 404 426. If you have any questions or queries about this event please do not hesitate to contact me.



MUDGEE AERO CLUB PRESENTS...

# Wings Wheels & Wine 2007



- Aerobatic displays
- Military hardware
- Fixed-wing and rotary aircraft
- Cars and bikes
- Classic machines
- The very best Food and Wine from the district!

**Saturday 21 April 2007  
Mudgee Airport**

Be part of the show in 2007 and join in the fun. Calling all wineries, foodies, sporting and community groups, special interest clubs, associations, aircraft and Volkswagen clubs!

See unbelievable aerobatic displays by champions of the sport. Experimental, recreational sports and workhorse aircraft. High-speed ground and air challenges! Cars and bikes from around the world. Exotic, classic and extraordinary machines.

Displays, demonstrations, prizes and more. The best in food and wine from around the region, taste, enjoy and buy.

**A great family day out!**



*Club Veedub Sydney has booked a display parking area. Come along and enjoy the show!*



**FOR MORE INFORMATION:**

Mudgee Aero Club  
Wings, Wheels and Wine 2007  
PO Box 272  
Mudgee NSW 2850

Phone: 0417 683 069

[www.mudgee.aero.club.hwy.co.nsw.au](http://www.mudgee.aero.club.hwy.co.nsw.au)

## Christmas in July

*Due to popular demand following the great success of last year's Christmas in July at Mudjee; we're doing it again.*

*Date: 21st July, 2007*

*Where: Coachman's Inn Motel,  
Cnr Great Western Highway & Oberon Rd, Bathurst  
Phone: 1800 808 880 (toll free)*

*Cost: \$205.00 per double for a 3 course Christmas dinner,  
accommodation and cooked breakfast*

*Menu: Entrée Prawn Cocktails  
Main: Roast Turkey & Roast Pork  
Baked Vegetables  
Dessert: Christmas Pudding or Trifle  
The restaurant is fully licensed no BYO.*

*We have reserved 12 rooms so please ring Judy or Ken at the Coachman's Inn **BEFORE** the end of March with a credit card to hold your spot - limited numbers due to restaurant size.*



*Meet at the Westbound Caltex Service Station on the M4 Eastern Creek (same place as last year) at 9.00am for a 9.15am departure. We'll stop along the way for morning tea.*

*We'll visit the National Motor Racing Museum at Mt Panorama, for those that are game there's a simulator that allows you to have a fast lap of the Mountain without risking a fine. We'll drive around the track, check out Mt Panorama Winery.*

*We had a lot of fun last year, so get in early to avoid disappointment.*

*For further details or if you have any questions contact either:  
Russell Sarten on 0401 579 672 or Heather Pascoe on 0409 663 835*

*PLEASE ADVISE HEATHER IF YOU ARE ATTENDING!*

# Sawtell Winter Break

**17th - 19th August 2007**  
**Sawtell Beach Caravan Park**  
**Lyons Road, Sawtell**  
**(02) 6653 1379    1800 729 835**



Plenty of cabins & camping spaces. You must make your booking directly with the caravan park on the above numbers.

The caravan park is within walking distance of the town centre.

Catch up with your VW friends in a relaxed atmosphere.

Participate in the activities - or just veg out.

Location: 554km north of Sydney  
427km south of Brisbane

7 hours drive  
5 hours drive

All VW clubs are invited to attend.

Booking Code: ClubVeeDub

Toll-free telephone number for the park: 1800 729835

Internet address of the park: [www.sawtellbeachcaravanpark.com.au](http://www.sawtellbeachcaravanpark.com.au)

Organised by local members of Club Veedub Sydney.

More info soon!



**VW WARWICK 2007**  
**SEPTEMBER 29-30th**  
WARWICK DRAGWAY WARWICK QLD  
[www.vwma.net.au](http://www.vwma.net.au)



It's on again, VW Warwick at the Warwick Dragway, Warwick Queensland on the weekend of September 29-30th 2007.

Last year saw a thrilling weekend of racing, with both competitors and spectators enjoying the two days of all Volkswagen action. Seasoned racers and first timers raced the way drag racing should be - unlimited runs and a heap of fun. Everyone would have come back the next month if the event was run again.

This year promises to be even bigger, attracting entrants from all around Australia, including a number of new cars being built especially for the Warwick event. That elusive 1/8th mile record is still within sight of the quick cars, and a few surprise winners are guaranteed with the short track giving away little advantage to anyone.

And racing is not the only thing on offer over the two days. Saturday morning features a street parade through Warwick CBD and is open to all Volkswagens. Sunday hosts a show'n'shine competition, broken into two judging categories, a public vote for your favourite VWs and a points judged shootout. There will also be a burn-out competition, swap meet, and children's activities.

Camping is again offered at the track for competitors and spectators, with hot and cold showers, and catering if required. The camp ground last year was the perfect place to kick back and talk with old friends and make new ones. It was a great atmosphere.

Entries are now open, and pre-entry for competitors is a must. Campers and those wanting catering are also encouraged to book early.

VW WARWICK IS HOSTED AND ORGANISED BY VW MAGAZINE AUSTRALIA FOR AUSTRALIAN VW ENTHUSIASTS.



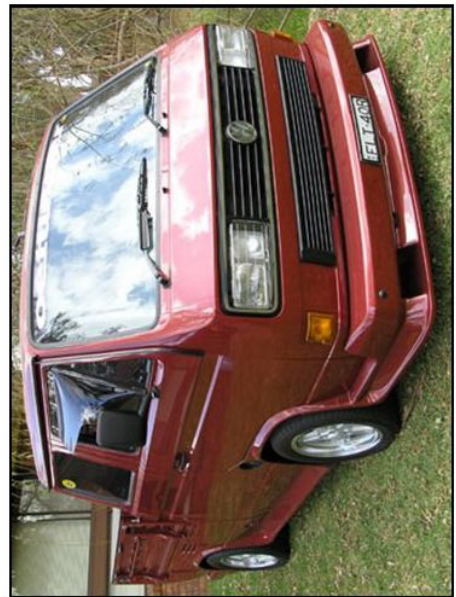


Flat Four Vee-Dub Club of Sydney proudly presents  
The Premier VW Indoor Event

# THE ALL VW SHOOTOUT

4th November 2007

The Michael Wendon Centre, 62 Cabramatta Avenue, Miller



Entrants, sponsors and dealers  
can contact:

Murray 02-9618-2205 (ah)  
or e-mail: [info@flatfour.org](mailto:info@flatfour.org)

Further info and pre-entry forms  
will be posted on:  
[www.flatfour.org](http://www.flatfour.org)  
and

<http://forums.aussieveedubbers.com>



## Der Bericht von Präsidenten.

Don't forget the VW Nationals 2007 is only a few weeks away, so start shining up your cars for the show day. We need volunteers to help out with parking, swap meet area, kids fun events and the club stand. Please call me if you can spend some time to help us on Easter Sunday April 8th.

Once again Volkswagen Group Australia has agreed to support our event, the level of which is more than generous. We have a further 70 minor supporters, with around 30 of them setting up a trade display on the show day at Fairfield.

I travelled up to Brisbane the other weekend to attend "The Dubs by The Pub" show. It's a long way north of Brisbane, nearly at Noosa, on the Sunshine Coast. It was good to see different cars and car show standards. We arrived early at the Ettamogah Pub car park, where a few traders had set up shop. The weather couldn't make up its mind on the day, as the only thing it didn't do was snow. The venue looks like it's a bit small, with the parking area jammed pack full of Volkswagens attending the show. It would be better to have a bit more room to expand and also view the cars more easily. The swap area was down on numbers, from talking with regulars, but we did manage to find a few trinkets. Congratulations to the BLBVWC for a great day.

Précis of Committee and General meetings:- VW Nats, Raffle prize for Nats, Public Liability Insurance, VW Nats jobs, Illawarra show day, NRMA display Day, Newcastle Euro Day, Putt Putt golf, Water cooled Cruise, Thirlmere Car day.

KeeponKruzin,

David Birchall



## Canberra Kapitelreport.

Greetings from Canberra, we're geared up for a big year with some great events coming

up. By the time this is in print we should have had our first show for the year - Shannons Wheels, on the lawns of Old Parliament House, I hope it goes / went well! This was on Sunday 11 March.

We have a number of members who want to drive up to Sydney for the Nationals. If there are some other interested parties who would like to join the group, please contact the committee and we'll pass your details on. That weekend also sees the Kombi Club come to Canberra for their first major event. I'm sure that anyone who doesn't go to Sydney that weekend can drop in to say hello.

Sunday 20 May should see us having some form of drive to celebrate National Motoring Heritage Day. This is being worked as we speak and we'll probably have a minimal fee, to be donated to charity. And on 24 Jun, we hope to have another of our highly successful hot chocolate runs...the last one went well and we'll better it this time. Etch the date into the diary!

Some of the local storms have made a mess of a few of our local VWs. I hope that we haven't had too many damaged and that those owners who have had some woes are able to claim easily. Mother Nature is certainly keeping us on our toes.

We are also in the process of finalising the date for the German Autofest this year and will publicise it as soon as we can. Happy Dubbing to you all!

Bruce



## Klub Kalender.

### March.

**Thursday 15th:- CLUB VW MONTHLY MEETING at the Greyhound Social Club, 140 Rookwood Rd. Yagoona (right next to Potts Park).** Get the latest VW news and views, plus VW socialising, drinks, raffles, trivia and plenty of prizes. Lots of fun, all welcome. 8:00pm start.

## **Club Veedub - The Legend Never Dies.**

---

**Sunday 18th:- Hunter Valley Drive - Wine Tasting and Lunch.** Organised by Club Audi NSW. See page 3.

**Thursday 22nd:- Nationals Magazine and Program pack night** at the Greyhound Club.

**Sunday 25th:- Porsche Club NSW Supersprint** at Oran Park South.

**Sunday 25th:- 7th Annual VW Jamboree** at Caribbean Gardens, Melbourne.

### **April.**

**Saturday 7th & Sunday 8th:- VW NATIONALS 2007 at Fairfield Showgrounds.**

**Thursday 12th:- Committee Meeting** at the Greyhound Social Club, 140 Rookwood Rd. Yagoona (next to Potts Park).

**Thursday 19th:- CLUB VW MONTHLY MEETING** at the Greyhound Social Club, 140 Rookwood Rd. Yagoona (right next to Potts Park). Get the latest VW news and views, plus VW socialising, drinks, raffles, trivia and plenty of prizes. Lots of fun, all welcome. 8:00pm start.

**Saturday 21st:- Wings, Wheels and Wine** at Mudgee Airport. Aircraft displays, food and wine, historic cars. See page 5.

**Saturday 28th:- Relay For Life - Sutherland,** at Sylvania Waters. An event to fight cancer. Contact John Weston on 9520 9343 for more info.

### **May.**

**Thursday 3rd:- Magazine Cut-off Date** for articles, letters and for-sales.

**Thursday 10th:- Committee Meeting** at the Greyhound Social Club, 140 Rookwood Rd. Yagoona (next to Potts Park).

**Thursday 17th:- CLUB VW MONTHLY MEETING** at the Greyhound Social Club,

140 Rookwood Rd. Yagoona (right next to Potts Park). Get the latest VW news and views, plus VW socialising, drinks, raffles, trivia and plenty of prizes. Lots of fun, all welcome. 8:00pm start.

**Saturday 19th:- Porsche Club NSW Supersprint** at Wakefield Park, Goulburn.

**Sunday 20th:- CMC Rylstone Swapmeet** at Rylstone Showgrounds.

**Sunday 27th:- Morpeth Pit Stop Cruz.** We are having a Sunday cruise up to the historical town of Morpeth, and on the way there stopping at my husband's Mechanic Workshop at Caltex East Maitland. The workshop will be open so that any VW enthusiast can have a look over their car on the hoist, and even give their VW a grease. Free sausage sizzle and soft drinks. Then cruise over to Morpeth for a coffee. Please reply if you are interested in coming along. Contact Rose on (0427) 550203, or email [avwnut@bigpond.com](mailto:avwnut@bigpond.com)

### **June.**

**Thursday 7th:- Magazine Cut-off Date** for articles, letters and for-sales.

**Thursday 14th:- Committee Meeting** at the Greyhound Social Club, 140 Rookwood Rd. Yagoona (next to Potts Park).

**Thursday 21st:- CLUB VW MONTHLY MEETING** at the Greyhound Social Club, 140 Rookwood Rd. Yagoona (right next to Potts Park). Get the latest VW news and views, plus VW socialising, drinks, raffles, trivia and plenty of prizes. Lots of fun, all welcome. 8:00pm start.

### **July.**

**Thursday 5th:- Magazine Cut-off Date** for articles, letters and for-sales.

**Thursday 12th:- Committee Meeting** at the Greyhound Social Club, 140 Rookwood Rd. Yagoona (next to Potts Park).

**Thursday 19th:- CLUB VW MONTHLY MEETING** at the Greyhound Social Club, 140 Rookwood Rd. Yagoona (right next to Potts

Park). Get the latest VW news and views, plus VW socialising, drinks, raffles, trivia and plenty of prizes. Lots of fun, all welcome. 8:00pm start.

**Saturday 21st:- Christmas in July** at the Coachman's Inn Motel, Bathurst. Meet at the M5 Eastern Creek Caltex for the cruise via Mt Panorama. Contact Russell on 0401 579 672 for more info.

### August.

**Saturday 4th:- Porsche Club NSW Supersprint** at Oran Park GP.

**Saturday 18th & Sunday 19th:- Sawtell Winter Break** at Sawtell, NSW. Details to be advised.

**Saturday 25th & Sunday 26th:- Shannons CMC Eastern Creek Classic**, Eastern Creek Raceway.

### September.

**Saturday 29th & Sunday 30th:- VW Warwick Drag Race Weekend** at Warwick Dragway, Queensland. Organised by Volkswagen Australia magazine. Go to [www.vwma.net.au](http://www.vwma.net.au) for more info.

**Sunday 30th:- Old Bar Beach Festival and Kombi Gathering** at Old Bar, NSW. Contact [kombi@oldbarbeachfestival.com.au](mailto:kombi@oldbarbeachfestival.com.au) for more information, or phone Cozette on (02) 6553 7328

## Marktplatz.

*[info@clubvw.org.au](mailto:info@clubvw.org.au) is the address to email ads. Classifieds are free to Club VeeDub Sydney members and \$10.00 for non club members. Ads will appear for two months, or longer if requested.*

*In addition to appearing here, all ads will also appear on our club website [www.clubvw.org.au](http://www.clubvw.org.au) Photos can be included on the website but not in Zeitschrift. All classifieds will appear in Zeitschrift first in order that our*

*members have first chance to see them. They will then be transferred to the club website on the third Thursday of the month.*

*Non-members please post us a cheque or money order for \$10.00, payable to: Club VeeDub Sydney, c/- 14 Willoughby Cct Grassmere NSW 2570.*

### New Ads.

**For Sale:- 1975 VW Kombi pop top** Auto 185,000 original km second owner. Top end rebuilt 5,000 ago by Klaccks motors and Gear box serviced. 12 mths rego \$ 8,000 O.N.O Phone Brian 0422613988 or 02 97114203

**For Sale:- 1964 VW** for sale \$3000 ono, 27000 original miles. Last registered 2004 this is the last time it was started. My mates uncle owned from new and I purchased when he past away. Always garaged until last month ran out of room and it been out in the weather since. Wayne Schultz phone 02 8825 7017, Mob 0418 269 262.


**For Sale:- 1975 VW Superbug.** An ex-showcar which has been greatly cared for in the 7 years that I have had it. The engine is a Stan Pobjoy reconstruction, 1.9L, with Haltech Injection, 1.25 ratio rockers, 110 Engle cam, lightened flywheel, Pertrenix ignition, Bugpac exhaust, Recaro interior, Clarion sound system, and still maintains the original look. There are many more features, and it truly is an impressive bug. I have recently reconditioned the engine, and it has never run as well before. Over \$40 000 has been spent on this car. The engineering certificate comes with it too. Honda Metallic Blue in colour, and registered until August. Price: \$14 900 (negotiable). Call Johnny (Western Sydney): 0415 344 599

**For Sale:- 1970 Beetle**, last rego 2003. \$850. Phone Norm, 02 4625 7057.

**For Sale:- New IRS floor pans**, \$150 pair. Phone Norm, 02 4625 7057.

**For Sale:- Autolinea alloy 1600 crankcase.** Brand new, totally stock, untouched. Dual relief valve. \$800. Phone Rudi on 0418 442953.

## Trades and services directory.



OFFICE: 9651 3870  
Fax: 9651 3746

**TOWN & COUNTRY**  
ACCOUNTANCY & TAXATION SERVICES

**MICHAEL SAID**  
Principal

PUBLIC ACCOUNTANTS  
REGISTERED TAX AGENTS  
SPECIALISING IN SMALL  
BUSINESS CONSULTING

P.O. BOX 217  
ROUND CORNER 2158



P.O. Box 8133  
Glenmore Park NSW 2745

**Telephone (02) 4737 8499**  
Facsimile (02) 4737 8599  
Mobile 0410 787 607

email: [andrew.rankin@mortgagechoice.com.au](mailto:andrew.rankin@mortgagechoice.com.au)  
website: [www.mortgagechoice.com.au](http://www.mortgagechoice.com.au) and [andrew.rankin.com.au](http://andrew.rankin.com.au)

**Andrew Rankin**  
Principal



**MORTGAGE CHOICE**


MIAA  
MEMBER OF THE  
FINANCIAL  
REGULATOR This franchise is independently owned and operated by: Kyland Pty Ltd ABN: 96 101 353 833.



**KLAACK MOTORS**

Phone: (02) 9724 5901  
Or (02) 9727 2057  
Fax: (02) 9723 5250

**2A LACKEY STREET FAIRFIELD 2165**



**VINTAGE AND CLASSIC VEHICLE INSURANCE AND AUCTIONS**

- Agreed value means agreed value. If the car is a total loss you will receive the full sum insured.
- You have the option to choose your own repairer.
- Lifetime guarantee on repairs.
- In the event of total loss you will have automatic retention of the wreck, depending on the policy.
- No Blame = No Excess.
- Laid up cover for vehicles being restored or repaired.
- Free windscreen one per year without excess.
- Personal belongings and tools up to the value of \$400 - Subject to excess.

Ring Shannons for a free quote today! Phone 1300 139 006

**For Sale:- 1976 Beetle.** 1600cc engine, 105,000km. Full restoration two years ago, spent \$15,000. Never been in rain since. Nearly all German parts. All mechanical work done by Andrew Dodd Automotive. 23 years in family. NRMA Comprehensive insurance for \$10,000. Sept 2007 rego. \$8500 ONO. Car is at Merrylands. Phone Fred Maurier on (02) 9885 2211.

**For Sale:- 1990 Dual Cab Kombi.** 2.1Ltr High Compression European Engine, Oettinger Cam Shaft, Racewear Anti-Corode Head Studs, Performance Computer Chip, Air Conditioned. Automatic transmission. Koni Shocks, Lowered King Springs, Whiteline Sway Bars Front (22mm) & Rear (20mm), handles very well. Centra Alloy Wheels, 225/50 ZR16 BFGoodrich G-Force Sport Tyres. Body very Clean & Straight, No Rust, Fibreglass Canopy, Tow Bar, Always garaged. Interior: Clarion AM/FM CD Tuner, Bose front and Pioneer rear speakers. Rego to 12/07, more pictures of DC (Dual Cab) can be viewed at [www.sportcompact.net.au/kombi.php](http://www.sportcompact.net.au/kombi.php) ASKING PRICE - \$15,000 ono. To view DC or for any other information please contact Ray on 0411 756 000 or email [ray@jamboree.com.au](mailto:ray@jamboree.com.au), car is located in Brisbane.

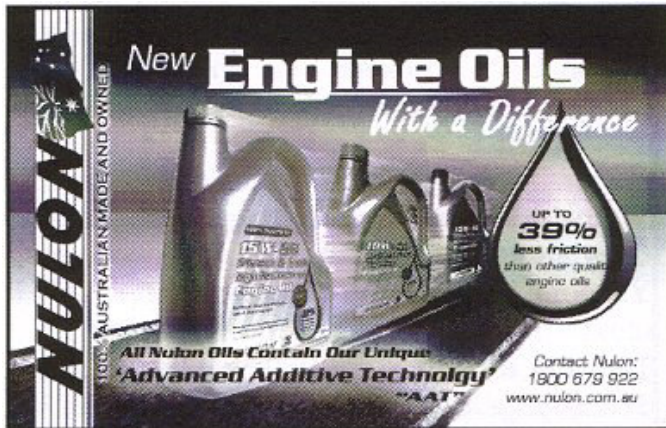
**For Sale:- December 1975 VW Superbug L series Yellow Beetle.** The car is in excellent condition with 98,000 original kilometres. Registration till December 2007. One lady owner until 2003. This car is in immaculate original condition without any modification. Serviced and maintained by Andrew Dodd VW specialist. Asking \$6,900. Phone 0405 385 063 or 02 9629 1921 after 7pm.

**For Sale :- VW Beetle 1963 Standard Model,** 12v, 1600cc motor, no rust, Reg. 31st March '07, reluctant sale \$2,500 ono ph. Craig, 0412 123 206 or 9481 9947.

**For Sale:- Golf Mk1 GTI grille** with Driving lights \$100.00, Golf Mk1 dashboard, reskinned as new, no cracks or marks, \$150.00 contact Bevan on 02 6645 4502.

**Wanted:- Workshop manual for 1976 Beetle,** must be good quality eg Bentley etc will

## Trades and services directory.



**PRESTIGE**  
EURO PARTS

Auto Xtras & Fashion Accessories  
p. (02) 9684 4771  
f. (02) 9638 4266  
George. 0412 434 762  
e. info@prestigeeuroparts.com.au  
w. www.prestigeeuroparts.com.au

36 Bridge st., Rydalmere, N.S.W. 2116  
Sydney Australia

Mercedes-Benz  
MINI  
Volkswagen  
Audi  
PORSCHE

### No Bugs Just Beetles



Alpha dot net Australia Pty Ltd  
Classic Internet Service Providers:  
9211 7782  
Here and now!

## Cub VeeDub Merchandise

For club T Shirts, hats,  
jackets etc.

Contact Raymond Rosch  
(02) 9601-5657 or  
sales@clubvw.org.au

swap for Bentley T2 manual contact Bevan on 02 6645 4502.

**For Sale:- Bentley workshop manual** for 1974-79 Passat. \$25. **Clymer manual** for VW Transporter. \$25. **Haynes manual** for diesel Golf. \$25. Phone Bevan on 02 6645 4502.

**For Sale:- Michelle Burke's 1976 Kombi camper.** First time ever offered for sale in 31 yrs. Completely original condition, never been restored. Multi trophy winner at the Nationals, Shootout, etc. and as featured in VW Australia magazine Issue 7 (pg 78-82). Also has original annexe (only used once). Interior all original including timber cabinets, and original gas bottle and purchase papers. This Kombi camper is museum quality and can only be described as in unbelievable condition. For more details please ring Bill on 0412 005 089. Best offer around \$18,000.

## Previous Ads.

**For Sale:- Classic 1973 VW Squareback,** immaculate condition for its age. 1600 engine, 4 speed manual transmission. Full Service history, 3 owners only 30,000 miles after engine rebuild. Selling by reluctant VW enthusiast as i am embarking on a restoration split screen kombi. Massive boot space, Sony Cd Player with AM/FM radio, serviced regularly. Very reluctant sale. Reg till Feb 2007. Fantastic car for any purpose. I have never had ANY problems. Price: \$4000. Any questions, please don't hesitate to call me, Matt, on 0415 365 044. For more Pictures email me at [matt@tri-studios.net](mailto:matt@tri-studios.net)

**For Sale:- 1957 VW Oval Window Beetle.** Presents well, mechanically excellent, many era accessories fitted, body and interior in very good condition, well maintained and nothing to spend, currently on historic registration. Good Oval Windows are hard to find and this is definitely a keeper, very reluctant sale. Comes with some spares. \$9,000 ONO. Bill Daws 02 4647-3781 (h) or 0419-431-531 (m)

**For Sale:- 1971 Superbug,** was planning a restoration, body has been separated from chassis, now back together, no motor, rust in body, sell as a complete car. Asking \$500.00

## Trades and services directory.

ABN 45 070 734 314  
Tel: 9534 1077



All Bug & Mechanical Repairs  
New & Second Hand Spare Parts

Unit 1, 143 - 155 Bonds Road, Riverwood NSW 2210



Specialising in;  
TRIM RESTORATION  
SMALL REPAIRS  
FULL RETRIMS

VINTAGE CARS TO COMMERCIAL TRUCKS  
SEATS, HEADLININGS, CARPETS,  
TUNNELS, DOOR TRIMS & CONVERTIBLE  
TOPS CUSTOM DESIGNS

02 4722 5333  
www.blackneedle.com.au  
Unit 16 37- 47 Borec Rd Penrith



COLLISION REPAIR CONSULTANTS  
NORTHMEAD INDUSTRIAL ESTATE  
UNIT 5D 23-25 Windsor Rd Northmead 2152  
Telephone 9630 3300 or 9630 3303 Fax 9890 8091  
Email [embassy@zipworld.com.au](mailto:embassy@zipworld.com.au)  
Web [www.embassysmashrepairs.com.au](http://www.embassysmashrepairs.com.au)  
John Walker Lic No. 100



www.classicveedub.com.au

36 Bridge St.  
Rydalmere  
2116 N.S.W  
Sydney Australia

phone: (02) 9638 4200  
fax: (02) 9638 4266  
George: 0412 434 762

ONO contact Brendan on 9623-1736 or 9570 1355

**For Urgent Sale:- 1974 Kombi**, unfinished project. Complete but disassembled. All bodywork done. Gearbox, brakes in good condition. Home-made unroof with vinyl ragtop or fit poptop. Also middle and rear seats in fair condition. Will sell complete preferably, or as parts if necessary. Located in Castle Hill. Contact Brendan on 0414 662830. All reasonable offers considered.

**For Sale:- 1956 Oval** on IRS pan, L bug box, 1880 stocker motor (90.5 x 73 mm), dual 36 mm Dellortos, polished Porsche telephone dial wheels, 6 inch front and 7 inch x 15, Recaro front seats with rear seat trimmed to match, Momo steering wheel, rear venation blind and many more accessories. No expense spared body off restoration. Reluctant sale. Has been in storage for last 10 years, no rego, can supply blue slip. \$17,500 ono. Car located in south west Sydney, call John on 0413 501 895

## Cover Car: Rose Merrett's Oval.

After looking at ovals for many months, I purchased the oval from Geoff Lister at Arcadia near Hornsby at Sydney in June 2005. It had been unregistered for 9 years. I registered it in Aug '05 after only having to replace tyres, brakes, adjust the front beam and a good detail.

It's a very neat car as it was fully restored in 1988 and kept garaged as you see it is as is. Nothing much has been done to it except the motor; it is now sporting a 1915.

It had also won a trophy back at the Nationals in 1990, also featured in an add for the Nationals in the Fast Fours & Rotaries Jul/Aug 90 issue as well as a four page feature.

Since I have registered it I have driven it to many events including Sawtell '05, Flat 4 Shoot Out 05, Blast from the Past at Berry '06, Nationals '06, Valla '06, Lismore Herb Festival '06 where it won best Beetle, Flat 4 Shoot Out 06, and Boris' Picnic Day. I try to take it for a run each weekend around Newcastle as I love

## Trades and services directory.



**BUG EATER**  
**NO BUGS (SYDNEY)**

ASSAULT MARK  
HACCP

**Caro & Ivy Martin**  
PO Box 3051 Bilpin NSW 2758  
Phone: (02) 4567 1358  
Caro 0427 311 047  
Ivy 0411 435 935  
Email: heparakur@bigpond.com

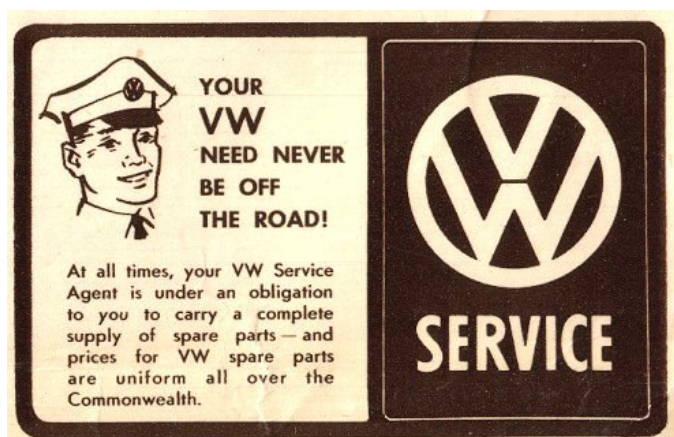


**Camden GTI**  
Matthew White  
22 Lerida Avenue  
Camden, Sydney. 2570  
VW GOLF AND SEAT  
1975-1998  
PERFORMANCE SPARES AND IMPORTS  
**0423 051737**  
Proud Sponsor of [www.vwwatercooled.org.au](http://www.vwwatercooled.org.au)




[Camdengti@gmail.com](mailto:Camdengti@gmail.com)

Now you can renew your membership online ! Email [sales@club.vw.org.au](mailto:sales@club.vw.org.au) for details, or download the form from the club's web site [www.clubvw.org.au](http://www.clubvw.org.au)



**YOUR VW NEED NEVER BE OFF THE ROAD!**

At all times, your VW Service Agent is under an obligation to you to carry a complete supply of spare parts—and prices for VW spare parts are uniform all over the Commonwealth.



**SERVICE**

driving it. Just the looks and comments I get are very nice. It make me feel good.

If you would like any more info please don't hesitate to contact me.

Thanks heaps!

Rose Merrett

## Library Update.

Over the next few months I'll be giving you a list of the books we have available in the Club library. The library is opened at each monthly Club meeting. As a member you are free to borrow the books, so long as you return them the following month.

We are continually adding to the collection, so the list will change over time.

These are the **Non-VW General Interest Motoring Books** available:

- The Used Car Buyer's Handbook
- Weber Carburetor Tuning Manual
- Auto Data Services Red Book - 1960-1994
- ANDRA Drag Racing Rule Book 2005-06
- CAMS Motorsport Manual 1971
- CAMS Motorsport Manual 1991
- Car Emergency Repairs in Australia & NZ
- Model Car, Truck and Motorcycle Handbook
- Drive To Survive
- Gregory's 200km Around Sydney
- Auto Blues - The Woman's Car Book
- Mobil Oil Inside Information
- Newnes Car Body Care and Repair
- Hot Cars! A Look At The Auto Theft Industry
- Reader's Digest Australian Car Book
- Repco Technical Pocket Guide
- RTA Licence To Drive - Practical Guide
- Hot Rods and Dragsters
- Automobile Restoration Guide

These are the **Haynes Automotive Skills Manuals** available:

- Haynes Automotive Detailing Manual
- Haynes Automotive Electrical Manual
- Haynes Automotive Heating Air Conditioning
- Haynes Automotive Tools
- Haynes Body Repair
- Haynes Used Car Buying Guide
- Haynes Welding Manual (on order)

Simon Matthews

## The Toy Department.

Plastic Toys models and in particular VW models were in abundance during the 1970s, and the types of plastics also varied from Bakelite and Amloid brands, to rubber based plastics.

The following image is of a green/blue Kombi, which is a 1/43<sup>rd</sup> model which appears to be made from Bakelite.



The Bakelite plastic looks similar to jade in some cases and would almost certainly fracture if dropped from a reasonable height.

Some other variations of this model can also be seen with clear plastic tops but only has a driver.

Another popular plastic is the Amloid plastic, a much durable plastic and has flexible properties. This green Beetle with driver is good example.

Continued on page 21

This form of plastic is well known also for Bakelite radios, commonly called at the time a 'wireless' these were made in the 50's & 60's in various colours.

By the way Bakelite is a form of synthetic resin chemically formulated and named after Belgian inventor & chemist LH Baekeland (pronounced Bay Ka Lite) in 1909.

This model is quite unique and rare because it also contains plastic figures of people these include a driver, an adult passenger, child and even a dog in the front seat! The rear lid also opens to show the engine and a spare tyre.





# 2007 OFFICIAL PROGRAMME



**20TH GREAT YEAR**  
**WWW.CLUBVW.ORG.AU**

## VW NATIONALS 2007

Easter Saturday  
7th April

Easter Sunday  
8th April



**10am: Navigation and Sight-seeing Run through south-west Sydney.** Bring a partner! Meet at the Greyhound Social Club, 140 Rookwood Rd Yagoona, at 10.00 am. We finish at Vintage VeeDub Supplies for a free sausage sizzle and a few drinks.

**9pm: Movie night at Fairfield Showgrounds,** Smithfield Road, Prairiewood. Come along and watch the movie or just have chin wag. If you want to help with setting up of the show area come at 7pm. BYO food & drinks.

### Show Day Fairfield City Showgrounds

9am-3pm Car Show assembly  
9am-3pm Volkswap  
9am-11am Car Show judging  
2.30pm Engine Blow  
3pm Trophy presentation  
4pm Raffle draw

VW Nationals 2007 Show & Shine is at Fairfield City Showgrounds, Smithfield Road, Prairiewood.

Huge undercover area for Show & Shine and Dealer Displays with space for up to 200 show cars undercover. On site catering available with plenty of everything.



**CREAT FUN FOR ALL THE FAMILY**

## VW NATIONALS 2007



Entries close at 11 am Sunday. One entry per car in categories listed 1–19 (maximum of 3 entries per car). Judges decision will be final

### Car Show Categories

- |   |           |   |                     |
|---|-----------|---|---------------------|
| 1. Beetle / Cabrio up to 1957                         | Standard  | 29. Golf (76-83)                                | Modified            |
| 2. Beetle / Cabrio 1957to 1967                        | Standard  | 30. Golf (84-93)                                | Standard            |
| 3. Beetle / Cabrio1968 onwards                        | Standard  | 31. Golf (84-93)                                | Modified            |
| 4. Beetle / Cabrio up to 1957                         | Modified  | 32. Golf (94-98)                                | Standard            |
| 5. Beetle / Cabrio1957 to 1967                        | Modified  | 33. Golf (94-98)                                | Modified            |
| 6. Beetle / Cabrio1968 onwards                        | Modified  | 34. Golf (98 on)                                | Standard            |
| 7. Kombi Split Screen (All Years)                     | Standard  | 35. Golf (98 on)                                | Modified            |
| 8. Kombi Split Screen (All Years)                     | Modified  | 36. Golf Cabrio (All years)                     | Standard & Modified |
| 9. Kombi Bay Window (All Years)                       | Standard  |   |                     |
| 10. Kombi Bay Window (All Years)                      | Standard  | 37. New Beetle 2000                             | Standard & Modified |
| 11. Type 3 and 4 (All Years)                          | Standard  |   |                     |
| 12. Type 3 and 4 (All Years)                          | Modified  | 38. Kombi T3 (All Years)                        | Standard & Modified |
| 13. Karmann Cabrio Aircooled. All Standard & Modified |           |   |                     |
| 14. Karmann Ghia (All Years)                          | Standard  | 39. Kombi T4 & T5                               | Standard& Modified  |
| 15. Karmann Ghia (All Years)                          | Modified  |   |                     |
| 16. VW Off Road Vehicles                              | All       | 40. Passat                                      | All                 |
| 17. Best Engine Bay                                   | Standard  | 41. Audi (All Years)                            | Standard            |
| 18. Best Engine Bay                                   | Modified  | 42. Audi (All Years)                            | Modified            |
| 19. Best Paint  | Standard  | 43. Polo  | All                 |
| 20. Best Paint  | Modified  | 44. Seat  | All                 |
| 21. Best Interior                                     | Standard  | 45. Volkswagen Audi Group VAG                   | All                 |
| 22. Best Interior                                     | Modified  | 46. Best Engineered Water-cooled                |                     |
| 23. Best Daily Driver Aircooled                       | All years | 47. Best Rat Class VW                           |                     |
| 24. Aussie Convertibles & Kit cars                    |           | 48. Best Displayed Vehicle*                     |                     |
| 25. Vintage Car (Club Registered)                     |           | 49. Peoples Choice*                             |                     |
| 26. Best Engineered Aircooled                         |           | 50. Highest Point Scoring Vehicle (Overall)*    |                     |
| 27. Non Factory Off Road / Buggies/ Baja              |           | 51. Volkswagen Group Australia Car Of The Day * |                     |
| 28. Golf (76-83)                                      | Standard  |   | *Automatic Entry    |

## VW NATIONALS 2007

# 2007 VW NATIONALS INFORMATION

**Australia's Premier VW and Audi event for all the family.**

**April 7th & 8th 2007, SYDNEY AUSTRALIA**

See the biggest variety of VW s and Audi s in Australia. Now in its 19th great year, VW Nationals has become the event for all VW and Audi owners. See the most immaculate array of models from just about every production year. Enter your car in one of the categories below or just come and look. It's the event for the enthusiast and all the family. Heaps of events all weekend with Sunday the big 'Show and Shine' day.

VW Nationals Enquires: David Birchall (02) 9534 4825 or david@clubvw.org.au

## Why not become a member of Club VeeDub?

You don't have to be a member to enjoy VW Nationals or to enter any event. Club VeeDub Sydney inc. is centred in Sydney, with many members throughout Australia and overseas. The benefits of membership are plenty:

- ?? Club discounts
- ?? Professional advice
- ?? Access to club tool library
- ?? Access to club book library
- ?? Access to club video library
- ?? Picnic and fun days
- ?? Observation runs
- ?? Vintage plate facilities
- ?? Zeitschrift (monthly magazine)

Our club magazine (Zeitschrift) has won many awards. Club VeeDub was the first VW Club in Australia with a vintage plate facility for members (for standard vehicles 30 years or more). Club VeeDub supports several charities through our fund raising activities. Send \$40.00 Au (within Australia) or \$50.00 Au (International) to Club VeeDub, Sydney PO Box 1135 Parramatta N.S.W 2124 Australia

## Club Veedub - The Legend Never Dies.



This Type 3 sedan, a red Kombi Pick up, a Karmann Ghia, and a Golf are also rare finds and made of similar plastics.



New things to look out for this month is the new five pack Matchbox sets which include a yellow Kombi van and aqua-coloured Beetle.



Also I have had some requests for Herbie Beetles, and I am told that Terry at Past & Present Model Cars has received a stock of 1/18 scale Love Bugs. He is even known to have



the odd bay window Bus in stock. You can reach Terry at [ppmc@kooee.com.au](mailto:ppmc@kooee.com.au)

Tony Bezzina

[Kbezzina@bigond.com.au](mailto:Kbezzina@bigond.com.au)



### Five Dock Volkswagen

大眾汽車保養維修及零件中心



FOR THE LOVE OF THE CAR

**保養及維修：**我們提供優質可靠的任何牌子汽車保養維修服務，全部選用原廠零配件及產品，務求令您的愛車得到優良的保養及護理。我們有一流的維修廠房及技術和經驗豐富的工程師，Five Dock 大眾車行的一流服務定能令你滿意。

**零配件中心：**Five Dock 大眾車行擁有多年的經驗，原廠汽車零配件齊全，價錢合理。

**另有多項特別服務包括：**

Pink slip 驗車；機械钣金維修；維修及保養空調；修補及更換擋風玻璃；修補輪胎；四輪定位等等。

保養維修及零件中心 電話：9712 2888  
115 Parramatta Rd, Five Dock  
(進口及停車在 Spencer St.)  
車身修理中心 電話：9744 5111  
營業時間：週一至五 7:30am - 5:30pm



我們在這裡

## VW Touareg Tows a Boeing 747.

A Volkswagen Touareg V10 TDI has succeeded in towing a Boeing 747-200 weighing approximately 155 tonnes. Watched by engineers, Volkswagen personnel and bemused passers-by, the Touareg V10 TDI completed seven complete runs on the auxiliary runway at Dunsfold Aerodrome, 65km south west of London.



The vehicle was a standard production Touareg fitted with a special towing adaptor to connect it with the aircraft towing link and loaded with 4.3 tonnes of metal ballast to bring its total weight to just over seven tonnes (7,030 kg) including the driver, an engineer from the technical department at the company's headquarters in Germany.

The car's engine, self-levelling air suspension, wheels, tyres and structure were all standard. One precaution that turned out to be unnecessary was the fitment of the 4.56 axle ratio from the Touareg V8 model in place of the 3.27 gearing of the V10. This was established as the demonstration was conducted in the second of the Touareg's 12 forward gears rather than first. The final modification was to change the outer body panels for photographic purposes so that this example was visually the same as the next generation Touareg which is due to be launched next year.

The attempt was designed to demonstrate the reserves of strength and durability of the Touareg V10 TDI. This model won The Caravan Club Towcar of the Year Awards full-size 4x4 category in 2004 and 2005 and has

established itself as the benchmark diesel SUV, offering an extraordinary combination of performance and fuel efficiency since it was launched in 2003.

A theoretical towing capability in excess of 200 tonnes was calculated by multiplying the 750Nm of torque generated by the V10 TDI engine through the standard transmission's lowest ratio and without taking into account the torque multiplication benefits of the torque converter. This however assumed a dry surface and loading the Touareg's body and suspension well in excess of its rated limits.

An initial trial was carried out successfully in Germany with an operational Boeing 747-400 weighing 190 tonnes but it subsequently became difficult to obtain an aircraft for the length of time and in an appropriate location to conduct a press demonstration. Colleagues therefore requested Volkswagen UK to obtain a suitable aircraft and location.

The result was an ex-British Airways Boeing 747-200 weighing 155 tonnes. The aircraft, first flown in 1980 and retired last year retains its full complement of 500 seats, 11 toilets and complete landing gear, albeit without an operating braking system. The original engines were removed last year to make way for dummy items used in the filming of a recent motion picture. Despite this, the aircraft still weighs 155 tonnes, due in part to the 28 tonnes of water held on board in the fuel and nose tanks.



The changes to the Touareg are more modest. Modifications extend to the addition of 4,345 kg of ballast in the form of steel plates set behind the front bumper and beneath the engine. The balance of the ballast was made up by bags of steel balls weighing 25 kg each. The result is a split of 2,755 kg over the front axle and 4,275 kg over the rear to bring the total to



7,030 kg which includes Uwe Krieghoff, the nervous driver. He was not prepared to say how much his body contributed to the 7,030 kg total.

Conditions for the attempt were far from perfect. A strong headwind combined with torrential rain and resulting standing water prompted concerns over traction on the wet surface. Despite the scale of the attempt the vehicle needed little preparation. The engine was warmed up before a brief visual inspection of the tyres prior to the attempt being given the green light.

The Touareg's standard towbar (fitted with an adapted towing bracket) was hooked up to the nose wheel collar of a Boeing 747 and the chocks were removed. At the wheel Uwe selected 'drive' and the low ratio, second gear setting on the Touareg's six-speed gearbox. The required tractive effort is at its highest during the initial pull to overcome the static friction of the aircraft tyres on the runway. Flatspots form on the aircraft's 18 tyres under the 155 tonnes of weight and additional resistance must be overcome to get the aircraft rolling.

Uwe pressed the accelerator around halfway down in second gear before easing off as the aircraft gained momentum. With no visible loss of traction the Touareg began dragging the 70-metre airframe of the 747 along the runway, maintaining an even 8 km/h in the process. Having covered an estimated 150 metres the driver eased back on the throttle

before slowly engaging the Touareg's brakes to slow both the vehicle and the aircraft to a stop.

After the attempt Uwe commented: 'I was a bit disappointed we couldn't find something heavier to tow as it was a bit too easy! If anyone could lend us a heavier aircraft then please let us know.'

The vehicle was checked after the repeated runs and no side effects of the demands made on the engine and transmission could be found. The engine temperature remained normal, as did the transmission and the tyres survived without a hint of the forces passed through them.

## Volkswagen ESP plus Steering Impulse.

It's just a little tug on the steering wheel, "carried out" by the electromechanical power steering, "commanded" by the Electronic Stabilisation Program (ESP). But it's all that is needed for the driver to do the right thing intuitively: countersteer. In very specific situations; during emergency braking on roads with different friction coefficients (for example damp leaves or snow on the right and dry on the left). Countersteering contributes towards shortening the stopping distance in such cases by up to ten percent. But to do this, the car "needs" steering that can be actuated electronically. And this is installed in the Volkswagen Golf, Golf Plus, Jetta, Eos, Touran, Passat and Passat estate as standard.

ESP plus Steering Impulse in practice: Surroundings as previously described, autumn or winter, one half of the road surface is dry, the other is frequently covered with damp leaves or even snow. Until now, the scenario on the



surface described with different friction coefficients (called "m-split" in engineering terms) during emergency braking with ESP would end in an ideal case as follows: Thanks to ESP, the car will not skid out of control, the driver can keep it on course and avoid any possible obstacles. Since the braking effect has to be based on the wheel with the poorest friction coefficient in order to prevent the vehicle from breaking out, the wheels cannot be braked as sharply as they would actually permit on a dry surface. The reason for this: without countersteering in the correct direction, the vehicle would break out by overbraking of a wheel, as the unsymmetrical braking forces caused as a result would bring about a tendency of the vehicle to rotate in the direction of the road surface with greater traction. Sounds complicated and it really is. But just at this point is when ESP plus steering impulse intervenes.

ESP determines the right direction: The system "detects" the direction in which the driver has to countersteer to decelerate the vehicle optimally without it breaking out. This is why the unit gives the command to the electromechanical power steering to send a steering impulse in the required direction. This is perceived by the driver in the steering wheel, who then follows this signal intuitively and carries out the classic countersteer. As a result of this stabilising intervention, the brake pressure at the wheels can be increased with the greatest amount of grip. The consequence: a shortening of the stopping distance by 10 percent.

The driver keeps everything under control: The ESP plus steering impulse does not take on the job to actually steer the vehicle. The

sovereignty with regards to handling the vehicle remains completely with the driver at all times. On the contrary, the system gives just a recommendation to steer, even if barely noticeable, with a torque of no more than three Newton metres. This is therefore as far as it ever goes: ESP thinks, the person steers – it's just more effective.

## New VW Cold Test Centre.

Volkswagen inaugurated the new cold and climate test centre at its Wolfsburg plant in November. Dr. Wolfgang Bernhard, Chairman of the Volkswagen Brand, opened the centre, with a total area of 5400 square metres, in the presence of 150 invited guests including the Chairman of the Board of Management of Volkswagen Aktiengesellschaft, Dr. Bernd Pischetsrieder, and the Chairman of the Supervisory Board, Dr. Ferdinand Piëch. "The new cold and climate test centre will significantly reduce development times for our new models because we will be able to conduct a much wider range of tests in our labs," said Bernhard. "Our engineers will be able to analyse and optimize development vehicles faster. This will save time and money and make for even higher quality."

The new centre, which cost about 30 million Euros, is designed for comprehensive testing under a wide variety of climatic conditions at temperatures ranging from -40 to +150 degrees Celsius. Even direct solar radiation, humidities up to 95 percent, elevations up to 3000 metres and wind blast can all be simulated. "This is an investment that sets new standards for the automobile industry," added Dr. Rudolf Krebs, Head of Engine Development.

From the Fox sub-compact through to commercial vehicles, all Volkswagen models face laboratory testing as one of the key components of technical development. The seven test chambers with highly advanced roller and test rig systems as well as an additional engine test bed are all available for laboratory testing.

Vehicles will no longer be heated or cooled to the test temperatures required in the test chambers themselves, as was previously the case, but in upstream conditioning boxes. Dr.





Jens Pohlmann, Head of the Cold and Climate Test Centre, explains: "This approach has significantly increased the capacity of the center. We can now carry out about 50 different tests per day in two-shift operation".

In addition, the centre features 13 cold and climate test cabinets for component testing. These cabinets, with volumes ranging from 0.5 to 24 cubic meters, are used for testing parts such as injectors, windscreen wipers and doors under extreme climatic conditions.

The cold and climate test center will allow Volkswagen to expedite the product creation process, with considerable cost and time savings. To date, changes in the design and development phase have been very costly and time-consuming. In future, it will be possible to include initial experience with prototypes in the development process at an earlier stage.

## New Passat R36.

Volkswagen is set to release its most potent 'R' model yet – the Passat R36. Joining the Golf R32 and only the second model in the Volkswagen line-up to carry the 'R' badge the new car will be not only the fastest Passat but also the fastest estate car Volkswagen has ever produced.



The basis for the R36 is a new 3.6-litre FSI V6 engine developing 224 kW. It's mated to an ultra-responsive, six-speed DSG gearbox channelling drive through all four wheels to maximise traction. At each corner are revised springs and dampers linked to uprated brake discs and callipers to add more bite under heavy deceleration.

Clothing the mechanical changes is a bespoke bodykit which at the front incorporates



a trio of deep airdams drawing a family resemblance with the Golf R32. Deep sideskirts and chrome highlights are framed by unique 18-inch wheels wrapped in 235/40 R18 tyres. At the rear a deeper bumper houses a pair of chrome-tipped tailpipes and revised light lenses. The estate version features a discreet spoiler on the trailing edge of the rear window.

Gripping the driver and front seat passenger are a set of sculpted sports seats bearing the R36 logo. The dashboard is finished in brushed aluminium panels set into which are a set of unique dials joined by a sports steering wheel and bespoke 'R' polished pedals.

Equipment levels, as with the standard Passat, remain high with ABS, ESP (Electronic Stabilisation Programme), Xenon headlights, 2Zone electronic climate control, a heated windscreen and seats, six airbags and a radio/CD player.



The R36 takes its place as the fastest production Passat with a claimed 0 to 100km/h time of 5.6 seconds. The estate version which, like the saloon, is fitted with 4MOTION all-wheel drive returns a time of 5.8 seconds. Both are

electronically limited to maximum of 250km/h.

The Passat R36 made its public debut at the Essen Motorshow on November 30th. Prices will be announced closer to the launch in 2007.

## **Volkswagen Rabbit - 'Dunny' Edition.**

Volkswagen has teamed with Kidrobot, the world's premier creator and retailer of limited edition art toys and apparel, to introduce a one-of-a-kind, special Dunny Edition Volkswagen Rabbit. Volkswagen unveiled the 2-door, black Rabbit at the grand opening of the new Kidrobot store-gallery located at 7972 Melrose Avenue in Los Angeles on Thursday, November 9, 2006. The Kidrobot Dunny Edition Volkswagen Rabbit features patterned high-gloss exterior, green tinted windows, headlights and taillights, and a green anodized aluminum accented interior, along with Dunny Rabbit patterned seats and a custom green molded shift knob. This vehicle is a unique partnership between Volkswagen and Kidrobot, demonstrating an exciting movement of the intersection of pop art and auto culture.



"The Volkswagen consumer expects the brand to innovate and stay ahead of the trends," said VW's Director of Brand Innovation Kerri Martin. "Our collaboration with Kidrobot brings two creative and innovative brands together to merge art, street culture and iconic design."

Kidrobot is an urban pop art factory of collectable and limited edition artwork and toys from designers throughout the nation. Some Kidrobot merchandise feature joint ventures with well-known artists from various backgrounds, such as industrial design, music, graphic design, graffiti, illustration and fine art.

Just like Volkswagen, Kidrobot distinguishes itself from other brands by being smart, creative and fun. Both brands share their place in pop culture while the partnership offers the ability to expose this unique project to the hip, trend-aware urban consumer.

"This partnership with Volkswagen, and the creation of the Dunny Edition Rabbit, was a great opportunity to take original art concepts to new heights, and bring to life a very diverse and urban clothing line" said Kidrobot founder Paul Budnitz. "The collaboration with Volkswagen was a valuable partnering since both the Rabbit and Kidrobot appeal to a similar young, urban crowd who relate to and appreciate very inventive products."



The Dunny Edition Rabbit will be displayed in front of the new Los Angeles Kidrobot store, and can be seen in numerous boutique retailers around the world after the premiere.

No plans have been made to release the 'Dunny' edition to the Australian market, due to the meaning of the word 'dunny' in Australia.

## **VW Concept Tiguan.**

The countdown for the Tiguan has begun: Volkswagen will bring the "small Touareg" to market at the end of next year – a SUV, a highly variable companion for use on all routes, terrains and in all situations. Some initial signs of just how this Volkswagen – with all-wheel drive in most versions – might appear were offered in early 2006 with the Concept A presented in Berlin. Front grille, headlamps, engine hood, front fenders and wheel arches gave flashing glimpses of the Tiguan and showed where the journey is headed. Now this journey will be continued in



Los Angeles: That is because with the exceptionally early world premiere of the Concept Tiguan at the LA Auto Show Volkswagen is now offering another preview of the sport utility vehicle that will arrive at its first customers within twelve months.

The concept car being presented in L.A. is powered by a “Clean TDI” that is an entirely new development – a next generation diesel engine. In this diesel of the future Volkswagen will employ a modular concept of different systems to once again significantly reduce emissions. One of these powertrain systems includes a NOx storage catalytic converter and as a whole reduces nitrogen oxides by up to 90% compared to engines known today.. The “Clean TDI” from Volkswagen will satisfy the strictest emissions standards in the world.



The “Clean TDI” introduced in the Concept Tiguan is also one of the first components of the BLUETEC offensive initiated jointly by Audi, Mercedes-Benz and Volkswagen. The goal of this partnership is to establish the concept of BLUETEC as a uniform label for clean and low

consumption cars and SUVs with diesel engines. BLUETEC denotes diesel drives that comply with even the strictest emissions regulations of the US market. The technologies used and individually developed by each manufacturer serve to reduce nitrogen oxides (NOx) in particular – the only exhaust components that lie above the rates of gasoline engines due to the conceptual design of diesel engines. The BLUETEC partnership was recently started in the course of the LA Auto Show.



The 19 inch tires for these prototypes were developed by Continental. The key feature: They have an orange radial stripe beneath the tire profile that matches the paint color of the Concept Tiguan. This radial stripe is not simply painted on, rather the orange penetrates the rubber layer as a “baked in” component of the tire’s cord casing. The orange stripes visible in the silhouette emphasize the sizes of the tires. Meanwhile, the 19 inch alloy rims retain the same Anthracite color as the body trim.



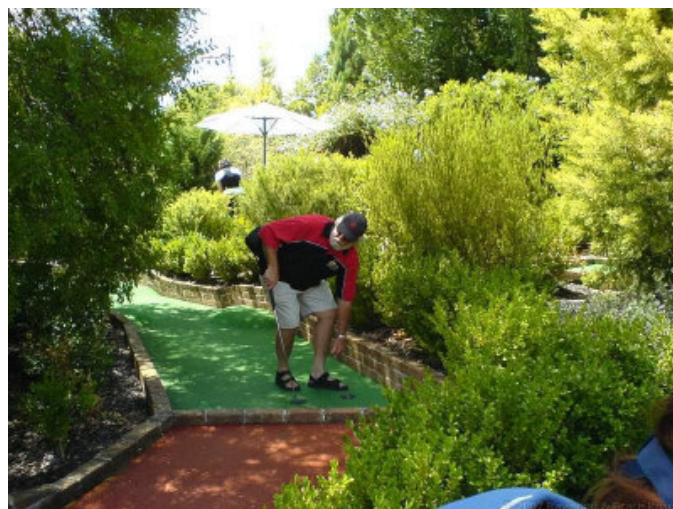
# Dural Putt Putt in the Gardens. Sunday Feb 18th.

Thankfully the weather was on our side for the day. A total of 9 cars (24 People) attended.



We all enjoyed a great round of 18 hole Putt Putt on the Camelot course.

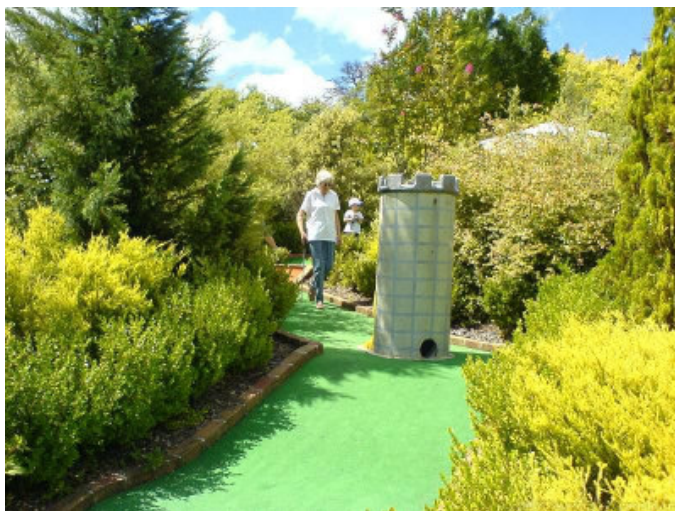
Congratulations to "Mum" Godfrey who came in at 3rd place, JohnWeston in 2nd and Wendy Davies who achieved 2 holes in 1, won 1st place and was the lucky winner of the trophy for the day, which was kindly donated by Dural



## Club Veedub - The Legend Never Dies.



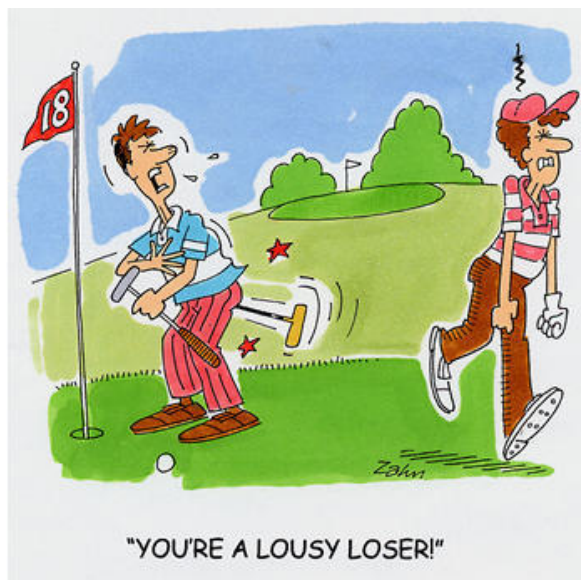
Putt Putt in the Gardens. Congratulations also to Ray Pleydon who also achieved a hole in one. Good on you Ray, a few more of those and you would've won.



After burning a few calories on the golf course, we all relaxed and enjoyed some refreshments before presenting the trophy and lucky door prize. Congratulations to Brian who took the door home.

Thank you to all who attended. We hope that you all had a great time and had a safe trip home.

Grace Rosch



## Route 66 to Canberra.

Route 66 is the famous highway that once ran from Chicago to LA; more than 2,000 miles all the way, as the song says. Get your kicks on Route 66! Today modern multi-lane interstate freeways have bypassed it, but various bits of it still exist, together with the tiny townships and ghost towns along the way. It is still possible to drive along bits of the old road.

After years of building and upgrading, our own Hume Highway is now a multi-lane freeway for most of its length, as is the Federal Highway. All very nice. In January I was going to drive my Kombi to Canberra for a couple of days, and I wondered if it was possible to do a 'Route 66' style drive along the OLD highways as much as possible? That is, the OLD Hume and Federal Highways as they existed in the early 1960s, before the modern freeways were built. Had the freeways obliterated the old roads, or did some still exist? I decided to see, and for a bonus, to pay a visit to the old VW dealer sites that existed at that time along the way.

From the city the Hume Highway begins in Summer Hill, where you turn left off Parramatta Road. It's also known as Liverpool Road, but whichever name you use it's still the same road. Surprisingly no Volkswagen dealers were built on Liverpool Road at all, and you can follow it out through Enfield, Chullora, Yagoona, Bass Hill, Lansvale and Warwick Farm. Dale Ford at Bankstown sold VWs for a short while in the early 1990s, but they weren't a REAL VW dealer. Likewise, RM Campbell (the former BMC/Leyland dealer) also once sold VWs briefly on the corner of Rawson Rd, but again they weren't a real VW dealer.

You don't find a former VW dealer until you reach Liverpool. Today the Hume Highway sweeps around past the Orange Grove Road turnoff, bypasses Liverpool town centre and meets Newbridge Road (Terminus St) at Hoxton Park Rd. However, back in the 1960s this way wasn't connected and the highway went through the middle of Liverpool. To follow it, you have to turn off the Hume Hwy at Macquarie Street – the sweeping left-hand curve here is the old highway.

Immediately opposite the park is a new corporate centre at 50 Macquarie St. This was once the site of Provincial Motors, the VW dealer

at Liverpool from about 1969 to the mid 1970s. The old buildings no longer exist, having been bulldozed and replaced by the new corporate building, but next-door is an older premises that is probably similar to what Provincial Motors once looked like.



An older VW dealer was Peter Warren Motors, who were further down on the corner of Elizabeth Street in the early 1960s. Today the Westfield complex takes up the entire block between Campbell and Elizabeth Streets, with a mall in the block beyond that, so you can't even follow the old highway; you have to go around via Castlereagh St and rejoin at Moore St. Nothing exists of the old Peter Warren Motors site today, as you would expect.

The old highway follows Macquarie Street through the town centre. As you reach the big intersection at today's Hume Highway, there is a large vacant site on the left. This was the site of the third Liverpool VW dealer, Hollywood Motors. They sold VWs from the late '70s to the early '80s, then Subarus after that. A used-car dealer then occupied the site until it was bulldozed a few years ago and today it lies vacant.



As you reach the traffic lights at the M5 overbridge, today's VW dealer is on your right – McGrath Van Centre. They also sell VW cars! A nice modern building, next to the other

McGrath centres for other marques. I would prefer it if they called themselves McGrath Volkswagen, but at least they are flying the flag.



The modern Hume is the same as the old one (just enlarged) through Casula to the Cross Roads. In case you are wondering, the old Liverpool Drive-In site was between Myall and Pine Streets, and is now the Casula Retirement Village. The old Liverpool Raceway (BE THERE!!!) was up in Green Valley, on the corner of Wilson Road and South Liverpool Road. Today the Valley Plaza shopping centre and suburban housing is on the site.

The old Hume Hwy is now Camden Valley Way, so veer right at the Cross Roads. Until recently this was very much as it used to be, but there are several new housing estates and the M5-M7 interchange nearby so a lot of work has been done. Out near the Trash and Treasure Markets the road returns to good ol' two-lane. And it was here that the Gregory's from the '60s and early '70s ran out of maps!

The expanded 1976 Gregory's follows the old Hume (Camden Valley Way) past the left turn at Cowpasture Rd and through Leppington and past the Oran Park turnoff at Cobbitty Rd, into Narellan and Camden. The old Hume follows the Camden Valley Way right into Camden town centre. At the end of town, follow the old Hwy by turning left at Murray St. On the opposite corner is the Camden Central shopping centre, a modern new facility. It stands on the site of another old VW dealer, the Adams Garage (early 1960s) that became Frank Brooking Motors (late 1960s to mid-1970s). Again, nothing remains to suggest that a VW dealer was ever on the site – but there was! There is no new VW dealer in Camden today.

The old highway followed Murray and Broughton Streets, to where it meets today's Hume (the Camden bypass) near the Macquarie



Bridge. Once upon a time the old road was straight at this intersection, and if you look at a modern street directory you can see that Ironbark Ave was once part of the old highway.

Remembrance Driveway follows the old Hume as it climbs and descends the Razorback range. It's amazing to think that this old road was still the main route to Canberra and Melbourne as recently as the early 1980s! I can still remember the jams on this bit during school holidays. It's fun to drive now, rather than a pain, thanks to the much-reduced traffic. Keep going through Picton, Tahmoor and Bargo.

It was at this point that I wasn't sure if the old highway still continued; did it end at the Bargo motorway interchange? Happily no, it does continue. Look for the signs to Yanderra and Yerrinbool. Traffic thins right out – hardly any cars on this old section of the original Hume Highway. It goes as far as a few km north of Mittagong, where the old road has been obliterated by the motorway and you do have to get on the new road for a short bit. However, the Mittagong exit is the old highway again so you can get straight off. Follow the old road into Mittagong township. On the left is Mittagong Mazda. They were once another old VW dealer, Bill Worner Motors, who sold VWs from the early 1960s to the early 1980s. He took on Subarus and Mazdas after that, but I'm not sure when they changed their name. They were still



## Club Veedub - The Legend Never Dies.

---

called Bill Warner when we drove past in June 1991, when we were on Steve Carter's Wine Trip to Jasper Valley.

The roads get a bit tangled here. To follow the old Hume Hwy, go through Mittagong and veer right. Don't take the Bowral and Moss Vale road on the left. Instead, go past the Mittagong RSL, cross over the motorway and go past the Wombeyan Caves turnoff. You are on the old Hume as it heads towards Berrima. Go through that historic town and past the 1835 Surveyor General Hotel (if you can!). There is another 3km of old Hume on the other side of Berrima before it suddenly runs out. You then have to get on the motorway, which is the old road much expanded. Occasionally you can spot short sections of overgrown old highway beside the motorway, but they are on private property and you can't get to them anyway.

You can get off at Marulan, where there is 5km of old Hume through the middle of the bypassed town. One end stops abruptly at a private property near the heavy vehicle station, and the other end finishes in the BP/Hungry Jacks carpark. Marulan is a sleepy little place with some interesting historical buildings. Imagine the old road being the main road to Melbourne!

You next take the Goulburn exit. Most of us should remember having to drive this bit before the bypass opened in the early 1990s. The old highway goes right through the middle of town (now Auburn Street), and then turns right at Clinton Street at the Tattersalls Hotel corner. On the diagonally opposite corner is Kennards Hire. They are on the site of another old VW dealer, C.F.V Sales Pty Ltd (1960s). They changed their name to McKavanagh Car Sales in the early 1970s and again to Geissler Motors in the mid 1970s before finishing up in the early 1980s. The current Kennards buildings are modern so the site had been bulldozed

previously. It does still look like a former car dealer though. There is no modern VW dealer in Goulburn.

The old highway climbs up Clinton Street then turns left at Cowper Street. The Big Merino is still there, looking forlorn, and the service station truck stop next to it has been bulldozed. The old highway ends at the junction with the motorway, and it is modern road as far as the Federal Highway turnoff.

The Federal Highway has also been re-engineered since the 1960s and today it is a modern four-lane divided motorway all the way to Canberra. North of Lake George there are tiny sections of old road to be spotted, but you can only see them coming north. Take the Collector exit and there is a few km of old highway through the township. You pass a very old abandoned Golden Fleece service station, which is rather funky. Some nice old shops and a pub on the former main drag too. At the other end you cross a fantastic rickety old wooden bridge, then it ends and you are back on the divided motorway again. The Lake George section has been extensively rebuilt in recent years, so if you haven't been along it for a while you are in for a surprise.

As the motorway leaves Lake George and climbs the hill, take the exit to the right near the scenic lookout/rest area. An excellent section of Old Federal Highway begins at this point. It is narrow and overgrown, but a joy to drive on. It twists and turns, up and down and across a number of old wooden bridges. Some very steep corners too. Watch out for sheep on the road. There are a couple of exits back onto the new motorway, but keep following the old road. It finally passes a plant nursery then ends near the Sutton road. The rest of the way into Canberra is modern multilane, but it does follow the line of the old highway.

Finally we are in Canberra, where there used to be three VW dealers (plus a workshop), and another in Queanbeyan. To find the first, turn left off Northbourne Ave just before you reach Civic, and park in Mort Street in Braddon. At number 28 is a Dyno Tune and ACT Brakes workshop. This is the site of the former VW dealer Greg Cusack Pty Ltd, who was the ACT VW distributor and dealer throughout the '60s and '70s. Cusacks were initially 50%, then later fully owned by LNC Industries. The Braddon site was Cusacks' main sales and service branch.





## Club Veedub - The Legend Never Dies.



The Greg Cusack main Showrooms in Mort Street, Braddon, A.C.T.



cement is an original metal VW sign. The footpath and borders have been moulded around the sign. Traces of original paint are still visible. What a wonderful thing to see for the VW enthusiast! Check it out yourself.

Cusacks' second site was their head office and sales branch at Manuka, on the other side of the lake. It was located on the corner of Flinders Way and Canberra Avenue, right across the road from Manuka Oval. It used to be an imposing two-storey office building with ground-floor showroom and petrol pumps out the front. In 1961 the Cusack Manuka Service Station had the largest petrol sales of any outlet in the whole ACT! It was closed in the early 1970s and demolished. Today the site is a much more modest Shell service station.



Greg Cusack Service Station at Manuka enjoys largest petrol sales in A.C.T.



When Manuka closed, Cusacks opened a new showroom at Phillip, which is a suburb in the Woden area. It was on the corner of Melrose

The buildings are original! If you look closely at the plain white roof panel next to ABC Brakes, you can still make out 'Greg Cusack' in the paint.

The major treasure of this site, however, is in the footpath out the front. Cast into the

Drive and Botany Street. Cusacks closed in the 1980s. Until recently the site was a Land Rover dealer, and now it's BMWs. A new VW dealer on a different site, Lennox Motors, opened in Phillip in the early 1990s and can be found today at 150 Melrose Drive.

Cusacks also had a panel and body repair shop in Fyshwick for a few years in the early 1960s, but I do not know the exact address.

Finally Greg Cusack also had one more dealership, over the NSW border in Queanbeyan. And what a location! The main street of Queanbeyan is Monaro Street, which runs right up the centre. Cusack's VW showroom was on the corner with Lowe Street, opposite the Post Office and the town information centre. This showroom lasted until the mid 1970s. Today a bright yellow Ray White Real Estate office is on the site. There is no VW dealer in Queanbeyan now. The Phillip showroom of Lennox Motors is the only VW dealer in the ACT today.

I took the motorway all the way home – faster but not as interesting!

Phil Matthews

## Ask Herr Doktor.

*Have you had a problem fixing your VW, or finding a decent mechanic who can? Need to find or make that special VW part? Want to know anything about Volkswagen? Got a question? Then ask Herr Doktor, c/- Club VW Sydney, 14 Willoughby Cct., Grassmere NSW 2570, or email [info@clubvw.org.au](mailto:info@clubvw.org.au)*

Dear Doktor,

I was looking at a VW Superbug 'L' model the other day, thinking of buying one. I've never had a late-model Beetle before. What are all the knobs on the instrument panel for? Where are the headlight and wiper switches on this model? Why did VW make these changes?

T.C., Bardwell Park

The Superbug L (or 1303 as it was known in Europe) was developed in response to US safety regulations of the time. One regulation stipulated a minimum distance between the occupants and the windscreen, in order to improve crash safety. To meet it, VW had to move the windscreen and roof

forward, and shorten the front bonnet. This allowed a redesign of the dashboard at the same time. The new dash was wide, deep, heavily padded, and featured new switches and a separate speedo binnacle. The speedo has a fuel gauge and warning lights as before. Defroster and fresh air vents run along the base of the screen, in the centre, and at the sides of the dash. From left is the glovebox, then a panel of switches including heated rear window and emergency flashers, with space for other accessories. The dual-circuit brake warning lamp is beside the steering column. On the other side is a clock space and the light switch for headlamps and instruments. Lower down, beside the ashtray, is the cigarette lighter, fan switch and two fresh air knobs. The left column stalk is, of course, for the blinkers and high-beam. The right stalk is for wiper and washers. A long way from a 40-horse Beetle!

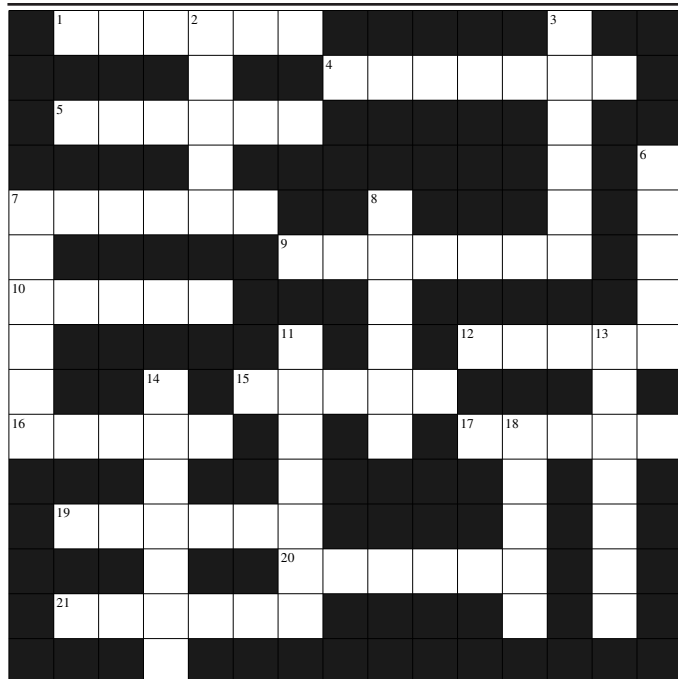
Dear Doktor,

I will be replacing my Beetle's clutch cable fairly soon. Where should I cut the hole in the tunnel? How do I know how tight the new cable should be?

A.F., Fairfield West

You should not cut your Beetle's tunnel. Some backyard neanderthals have been known to do this to make the job 'easier', but it weakens the floorpan and lowers the value of your VW. First disconnect the cable at the rear, remove the passenger seat, floor mats and the left kickboard. Remove the pedal cluster bolts and take off the cover. Detach the master cylinder pushrod and disconnect the accelerator cable. You can now move the pedal cluster enough to see, from the passenger side, the cable hooked on, and to remove it. Pull it out from the passenger side. Grease the new cable and insert it into the guide tube. This isn't hard - lie on the left floor, reach your left two fingers in behind the guide tube, and feed the cable in with your right. Don't rush. Then put everything back together. Follow your VW workshop manual. Early (ie 6-volt) Beetles need a clutch cable with short shank (part 113 721 335) as the guide tube is longer. If you use the later cable - 113 721 335A - it will 'click' when you press the clutch, as it hits the guide tube. Newer Beetles have a shorter guide tube, and the 335A cable has a shank 50mm long rather than 39mm. Both will fit. When all is back together, snug up the clutch cable and check the 'sag' in the guide tube beside the gearbox. It should be 25-45mm below 'straight'. Make sure the rubber boot is installed at the rear. Adjust the cable until the clutch pedal has 10-20mm of freeplay. Press it several times then recheck.

## Club Veedub - The Legend Never Dies.



Created with EclipseCrossword - www.eclipsecrossword.com

6. Makers of the Jack Brabham exhaust for VWs
7. Unusual 1970s British nickname for the VW
8. The original German name for the Mazda-style rotary engine
11. GTX? Oils ain't oils, Sol.
13. Herbie's movie title the fourth time around in 1980
14. A former British luxury marque now owned by Volkswagen
18. UK firm known as the Prince of Darkness

## Overdue Library Movies.

Would the following members please return their **overdue** Club videos to the librarian, Joe Buttigieg, at the March meeting:

**Lane Johnson** – borrowed videos No. 35, 37 and 46 on 19 October 2006.

**John Ladomatos** – borrowed videos No. 44 and 45 on 16 November 2006.

## Club Veedub Crossword.

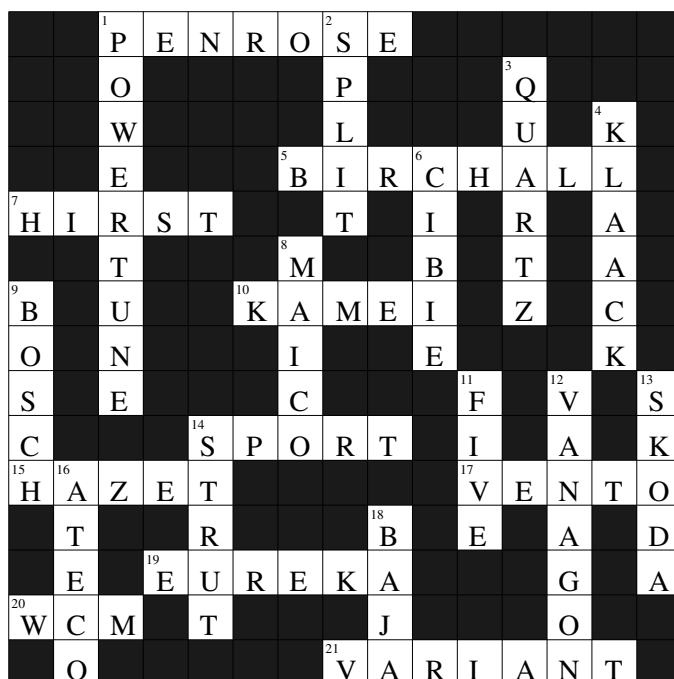
### Across:

1. Audi orange show car of 1991, never put into production
4. An air-cooled flat six-powered Chevrolet from the 1960s
5. A popular American VW magazine
7. Mosche's old VW shop at Punchbowl
9. The Melbourne suburb where VW's factory was once located
10. Maker of the 110 and 120 hot VW camshafts
12. The original booted version of the VW Polo
15. UK-based maker of Golf suspension kits
16. The last German factory where VW Beetle sedans were made
17. Hip-hop slang term for flashy, tacky decorated car
19. Our Nazi friend who started the VW project
20. They made expensive German hot up parts for air cooled engines
21. An engine that uses compression to ignite the oily fuel

### Down:

2. A UK Kombi camper with a roof that lifts up sideways
3. Cream wax car polish made by CRC Products Pty Ltd

## Last Month's Crossword.



Created with EclipseCrossword - www.eclipsecrossword.com

# VW NATIONALS Sponsors 2006.

We wish to extend a sincere *thank you* to all of our sponsors, who made the VW Nationals 2006 possible. Please support them, as they support us.

Volkswagen Group Australia	1800 060 936
All Metal Bumpers	0438 765 098
Alpha Dot Net	(02) 9211 7782
Andrew Dodd Automotive	(02) 9683 2184
Australian VW Performance Vic	(03) 9725 5366
Artemi Tee Shirts	0415 163 313
Ben Durie Automotive	(02) 4950 8248
Black Needle Motor Trimming	(02) 4722 5333
Blacktown Mechanical Repairs	(02) 9627 6209
Bookworks	(02) 9740 6766
Canberra VW Centre	(02) 6253 1481
C & S Automotive	(02) 9774 3340
Classic British & German	(02) 9546 7593
Classic Vee Dub	(02) 9638 4200
Classic VW Pacific Qld.	(07) 5535 4427
Cupid Wedding Cars	(02) 9837 0231
Custom Car Photographics	(02) 4268 3544
Custom Off Road Qld.	(07) 3356 4356
Cruisin Car Carpets	0400 996 855
Defender Safety	(02) 9838 8986
Doctor Mosha the VW King	(02) 9534 1077
Dodgy Brothers Batteries	(02) 9644 9966
Euro Automotive	0410 541 322
Genuine Trade Imports	(02) 9653 1114
Harding European Qld	(07) 3392 2980
H & M Ferman	(02) 9533 2722
Imported Car Wreckers Vic.	(03) 9547 2169
Indian Automotive	(02) 4731 6444
InMotive	(02) 8812 5299
Iron Cross Design	0418 978 155
karmannghia.com.au	0409 605 775
Karmann Promotions Vic.	(03) 9583 5626

Klaack Motors	(02) 9724 5901
Kombi Rescue	0400 356 057
Korsche Performance Centre	(02) 4325 7911
Les Barlin Automotive	(02) 6552 3190
Mick Motors Qld.	(07) 3266 8133
Mobile Model Cars & Toys	(02) 9543 5364
M&R Mobile Car Detailing	0405 800 156
Nerds On Site	1800 696 373
NRMA Vintage Classic Insurance	1800 646 605
No Bugs Sydney	0427 311 047
North Rocky Mechanical Qld.	(07) 4922 0111
Nulon Products Australia	(02) 9986 7800
Peakhurst Auto	(02) 9533 3151
Reliable Automotive Services	(02) 9438 3830
Rivo Auto Electrical	(02) 9627 1874
Shannons Classic Car Insurance	1300 139 006
Stanblast Pty Ltd	(02) 9498 3377
Stan Pobjoy's Racing Eng.	(02) 6654 3694
Stokers Siding Garage	(02) 6677 9246
Super Roo NSW Q8 Oils	(02) 4674 2833
TCCA Motorsport	(02) 9436 3668
Unicap Pty Ltd	(02) 4777 4006
V Force	(02) 9743 1247
Vintage Vee Dub Supplies	(02) 9789 1777
Volksbahn Autos	(02) 9688 2933
Volkshaven	(02) 4626 5255
Volkswagen Spectacular	(02) 6568 6327
Vollkommen Art Vic	(03) 9543 7804
VW Classic Sutherland	(02) 9521 5333
VW Magazine Australia	(07) 3806 1240
Wolfsburg Motors	(02) 9519 4524
Wurth Fasteners Australia	1300 657 765



**VOLKSWAGEN**  
**Group Australia.**